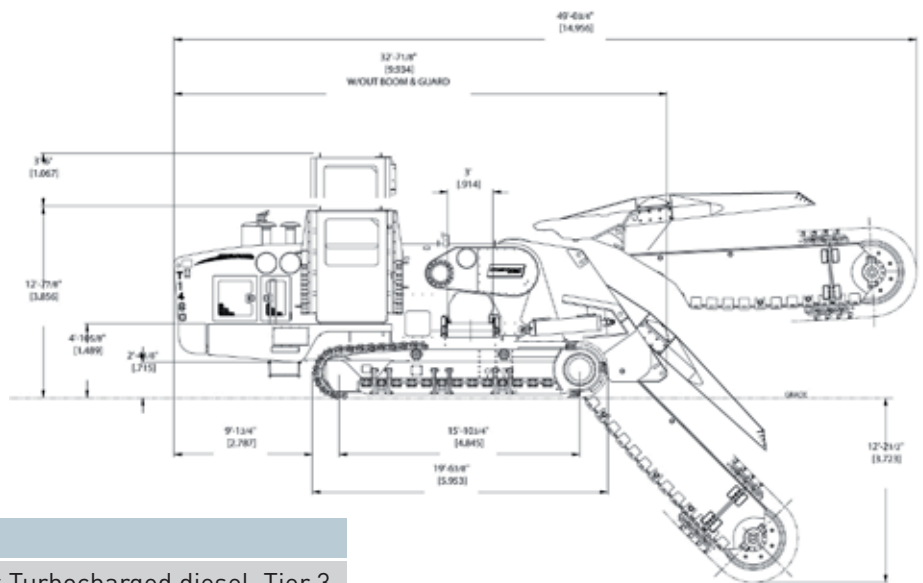


T1460 Mechanical Chain Trencher



Breakthrough Solution

Maximum utilization of the Cat C-18 630 hp (470 kw) diesel engine Drive Shaft provides optimal production in the toughest of conditions. Trencher uses a powershift transmission with torque converter to assure maximum torque to the digging chain. Strength and weight in all the right places provide smooth digging and exceptionally high uptime. State-of-the-art controls enable the operator to get the most out of the T1460 in a safe, accurate manner. The cab elevates for excellent visibility.

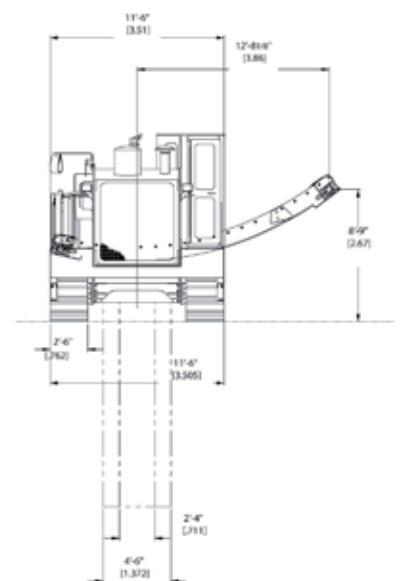


Engine		
Make and model	Caterpillar C18 Acert Turbocharged diesel, Tier 3 Stage IIIA emissions	
Gross Horsepower	630 hp @ 2100rpm	470 kw @ 2100rpm
Fuel consumption rate @ full hp	30 Gal per hour	113.5 L per hour
Cooling system capacity up to	125 F	52 C

Fuel Capacity		
Dual Tanks	350 Gal	1300 L
Operation	23.33 Hours at full horsepower	

Operators Station		
Fully enclosed pressurized cab w/air conditioner, w/heater		
Elevation	44 in.	1117.6 mm

Weight and Dimensions		
Machine weight	160,000 to 185,000 lbs	72,000 to 84,000 Kg
Width	11 ft. 6 in.	3.51 m
Height	12 ft. 7.9 in.	3.86 m
Length w/12 ft. (3.6 m) boom	49 ft. .75 in.	14.95 m



ENGINE

- Caterpillar® C18 Acert turbocharged and after-cooled diesel, Tier 3 Stage IIIA emissions
- 630 hp (470 Kw) @ 2100 RPM
- Fuel rate consumption: 30 gal. (113.5L)/hour at full horsepower
- 24-volt DC electrical system
- Cooling system — up to 125 F ambient (52 C)
- Heavy-duty 2-stage air cleaner
- Muffler
- Tachometer

FUEL CAPACITY

- Dual tanks 350 gal. (1300 L)
- Operation 23.33 hours at full horsepower

HYDRAULIC SYSTEM

- Capacity 184 gal. (670 L)
- Crawler drive closed loop piston pumps
- Conveyor drive closed loop piston pumps
- Accessory open loop

TRACK DRIVE

- Infinitely variable hydrostatic/mechanical
- Speed 1 mph (1.6 kph)
- Track control independent proportional electric over hydraulic
- Load control microcontroller with bypass
- Crawlers Cat D-7 components
- Grouser 30-inch (762 mm) wide, low-prole double grousers

OPERATOR STATION

- Fully enclosed, air conditioned, heated, and pressurized cab
- Elevation 44 in. (1117.6 mm)

DIGGING ASSEMBLY

- Heavy-duty mechanical chain drive. Power shift transmission with integral three-element torque converter. Four trenching speeds and reverse.
- Trench depth 8 to 18 ft. (2.4 to 5.5 m)
- Trench width 14 to 54 in. (356 to 1372 mm)
- Maximums: 42 in. (1067 mm) at 18 ft. (5.5 m), 48 in. (1219 mm) at 16 ft. (4.9 m), and 54 in. (1372 mm) through 14 ft. (3.7 m) depth.

CONVEYOR

- Arc type conveyor with hydraulic shift
- Belt width 36 in. (914 mm)
- Belt speed 0 to 870 fpm (265 mpm)

ADDITIONAL STANDARD ITEMS

- Floating wear plates
- Laser interface
- Work lights (2 fore/2 aft)
- Personnel guard

OPTIONAL EQUIPMENT

- Automatic laser control for grade
- Roadminer attachment
- Automatic laser control for steering
- Cold weather package
- Hydraulic fold-up crumbler
- Berm scrapers
- Air compressor and lube equipment
- Various types and widths of track pads

APPROXIMATE WEIGHT AND DIMENSIONS

- Weight 160,000-185,000 lbs. (72,000-84,000 kg)
- Width 11 ft. 6 in. (3.51 m)
- Height 12 ft. 7.9 in. (3.86 m)
- Length [with 12 ft (3.6 m) boom] 49 ft. .75 in. (14.95 m)

Note: All specifications are stated in accordance with SAE Standards or Recommended Practices, where applicable.